

Costa Diadema

FINCANTIERI
The sea ahead



Costa Diadema

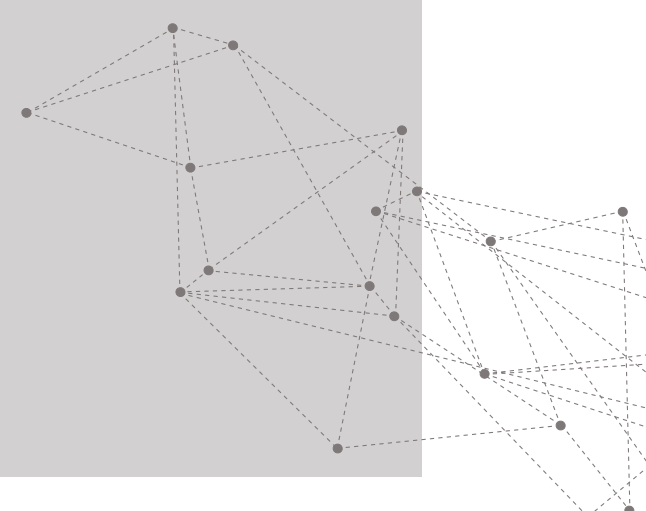


_ main facts

name	delivery	construction
Costa Diadema	2014	Hull 6203

_ main characteristics

	Hull 6203	
Gross tonnage	133,000	t
Length overall	306	m
Length between perpendiculars	269.10	m
Moulded breadth	37.20	m
Draught	8.35	m
Deadweight	10,250	t
Service speed	20	kn
Max speed	22.5	kn
MAIN MACHINERIES		
2 Electric Motors tot. Power	42	MW
4 Wärtsilä 12V 46C/2 Wärtsilä 8L 46C	4 x 12,600 + 2 x 8,400	kW kW
PASSENGER CABINS		
	1,862	
Penthouse Suites	12	
Suites	48	
Demi Suite	14	
Standard cabins outside (with balcony)	844	
Deluxe cabins (with window)	193	
Standard cabins outside (with window)	52	
Standard cabins inside	668	
Cabins for physically challenged passengers	31	
Outside cabins ratio	63.1%	
CREW CABINS		
	676	
PASSENGER AND CREW CAPACITY		
Capacity on board	6,200	



FINCANTIERI
The sea ahead



Head Office

Via Genova, 1 - 34121 Trieste (Italy)
ph. +39 040 3193111 - fax +39 040 3192305

Merchant Ships

Passeggio S. Andrea, 6/A - 34123 Trieste (Italy)
ph. +39 040 3193111 - fax +39 040 376969

fincantieri.com