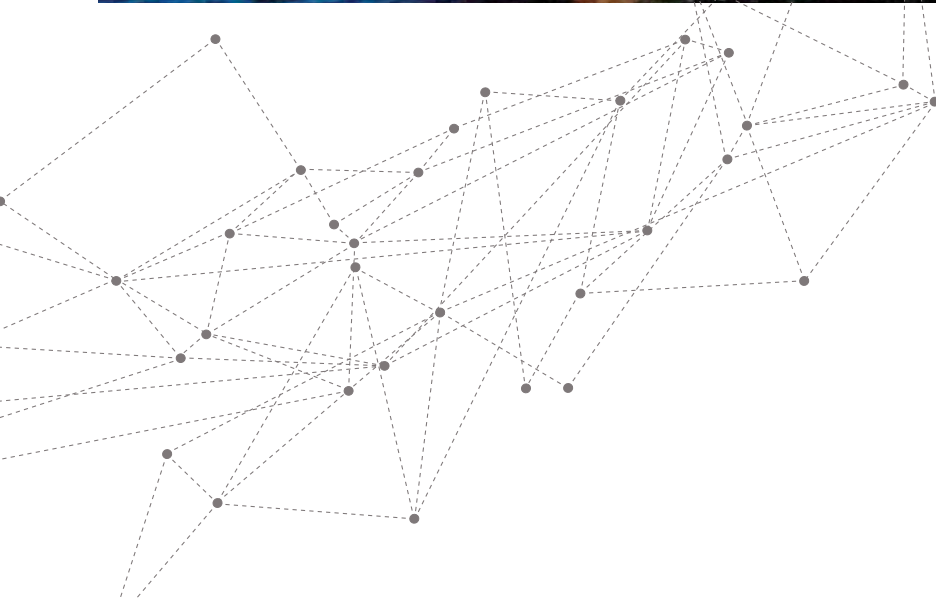
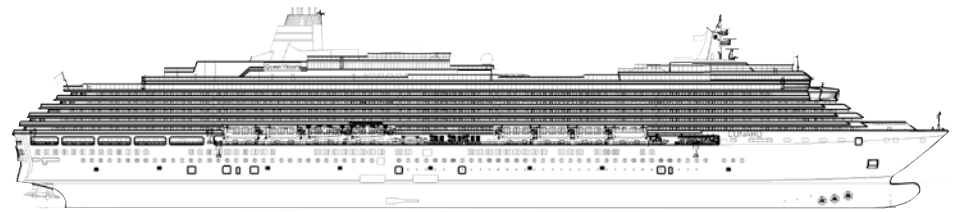




Queen Victoria

FINCANTIERI
The sea ahead





Queen Victoria

_ main facts

name	delivery	construction
Queen Victoria	2007	Hull 6127

_ main characteristics

Gross tonnage	89,500	grt
Length overall	294	m
Beam moulded	32	m
Design draught	8	m
Service speed	21	kn
Max speed	24	kn

MAIN MACHINERIES

Main Diesel engines Sulzer	4 x 11,520 + 2 x 8,640	kW
Electrical propulsion motors (POD) ABB	2 x 17,600	kW

PASSENGER CABINS

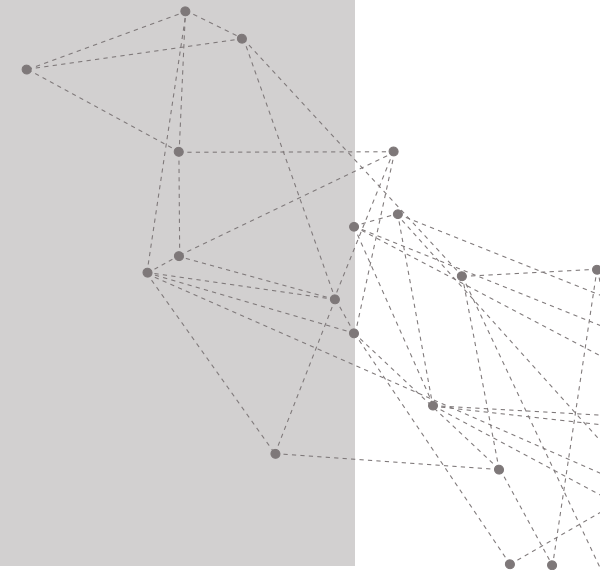
Total	1,007
Penthouse Suites	31
Suites	96
Balcony	591
Windows	146
Inside	143
Outside cabins ratio	86%
Balcony cabins ratio	71%

CREW CABINS

528

MAX PERSONS ON BOARD

3,200



FINCANTIERI
The sea ahead



Head Office

Via Genova, 1 - 34121 Trieste (Italy)
ph. +39 040 3193111 - fax +39 040 3192305

Merchant Ships

Passeggio S. Andrea, 6/A - 34123 Trieste (Italy)
ph. +39 040 3193111 - fax +39 040 376969

fincantieri.com