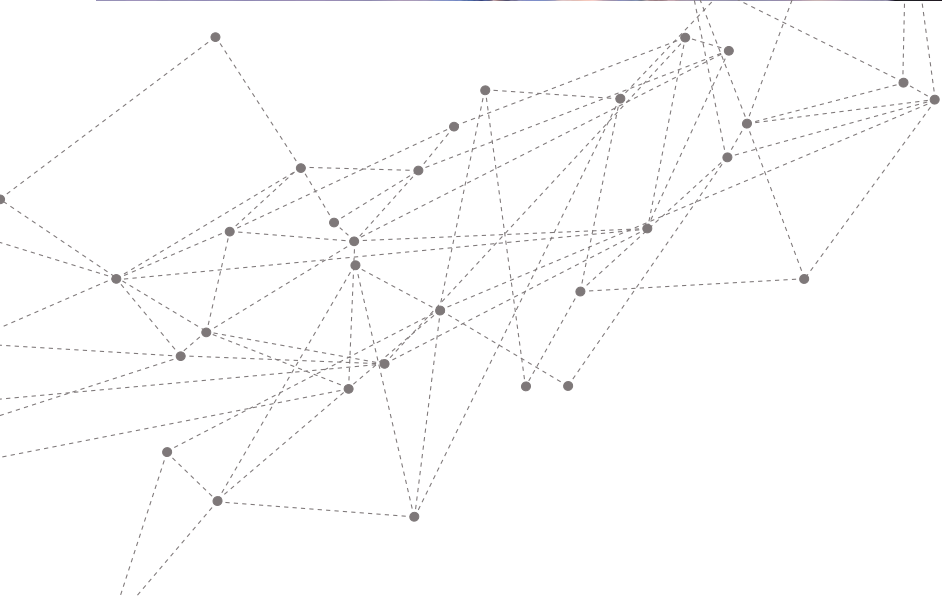




Fram



FINCANTIERI
The sea ahead



Fram



_ main facts

name	delivery	construction
Fram	2007	Hull 6144

_ main characteristics

Gross tonnage	11,647	grt
Length overall	113.7	m
Beam moulded	20.2	m
Design draught	5	m
Service speed	16	kn
Classification Society	Lloyd's Register	

MAIN MACHINERIES

Main Diesel engines MAK 6M25	4 x 1,980	kW
Azimuth propulsion	2 x 2,310	kW
Total installed el. power	7,920	kW

PASSENGER CABINS

	136	
Penthouse Suites	7	
Suites	17	
Balcony	6	
Windows	88	
Inside	24	
Outside cabins ratio	82%	
Balcony cabins ratio	4%	

CREW CABINS

41

MAX PERSONS ON BOARD

560

FINCANTIERI
The sea ahead



Head Office

Via Genova, 1 - 34121 Trieste (Italy)
ph. +39 040 3193111 - fax +39 040 3192305

Merchant Ships

Passeggio S. Andrea, 6/A - 34123 Trieste (Italy)
ph. +39 040 3193111 - fax +39 040 376969

fincantieri.com

