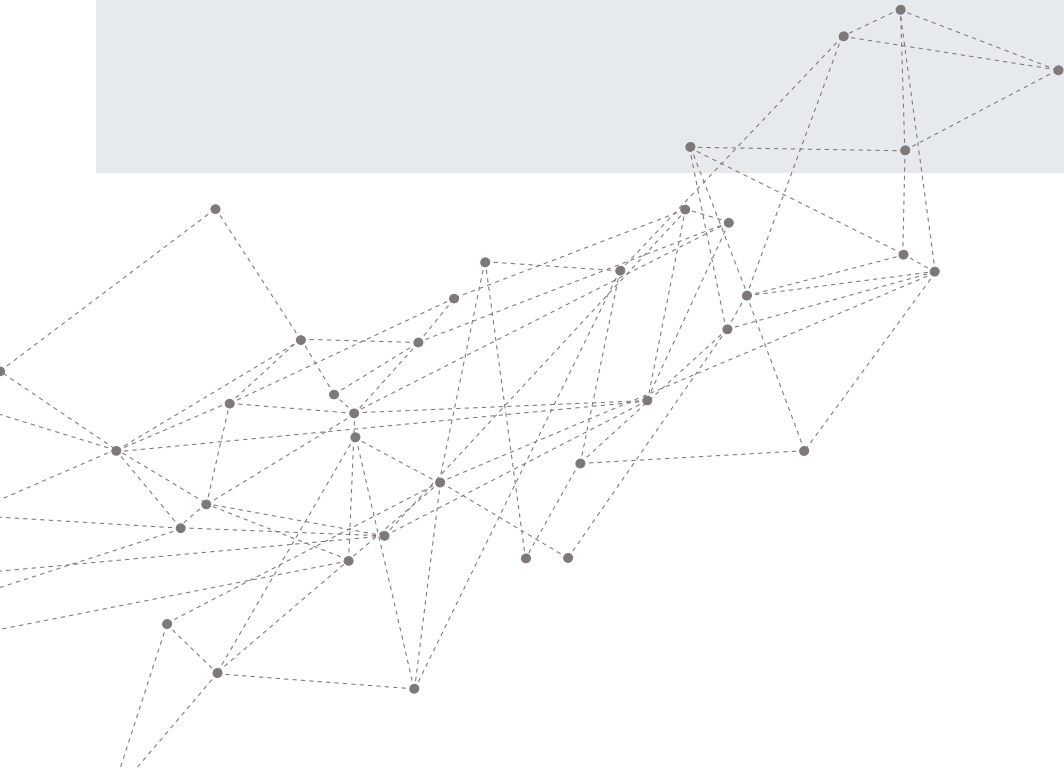


Hydrographic
Survey Vessel

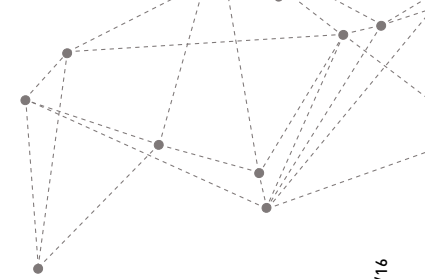
FINCANTIERI
The sea ahead



Hydrographic Survey Vessel

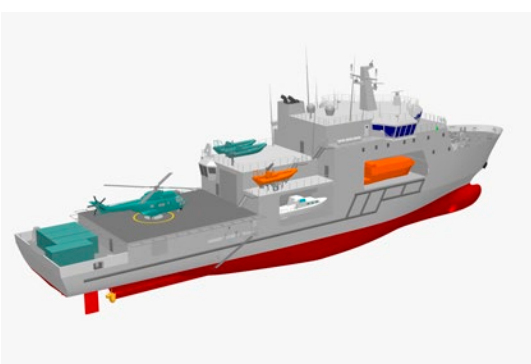
- Multipurpose vessel with various operational capabilities, including:
 - hydrographic and oceanographic surveying;
 - humanitarian intervention (evacuation) and medical support operations;
 - maritime search and rescue including diving activities;
 - command and control platform;
 - mine countermeasures (MCM) operations management;
 - helicopter and boat operations.

Driving design parameters are the efficiency in the whole speed range, extended range, remarkable seaworthiness performances. Due to the optimization of spaces, the ship is highly flexible in terms of configuration, embarked equipment and capabilities.



sintesa/HUB M-18/16

_ main characteristics



Length overall.....	94.00 m
Length between perpendiculars.....	80.00 m
Beam.....	16.60 m
Depth.....	8.50 m
Design displacement.....	3 400 - 3 600 t
Speed (max/range).....	18 - 14 kn
Range.....	5 000 nm
Endurance.....	20 days

ENERGY AND PROPULSION SYSTEM

Propulsion system.....	2x DE / 2x FCPP
Generating sets.....	3 + 1 Emerg.

CREW

Accommodation.....	25 - 80 people
--------------------	----------------

MAIN SYSTEMS

- 1 Integrated Navigation System
- 1 Int/Ext Communication System
- 1 Multi Beam Echo-Sound
- Space for C4I (Command, Control, Communications, Computers and Intelligence) Systems

DECK EQUIPMENT

- Flight Deck and hangar for NH90

FINCANTIERI
The sea ahead



Head Office

Via Genova, 1 - 34121 Trieste (Italy)
ph. +39 040 3193111 - fax +39 040 3192305

Naval Vessels

Via Cipro, 11 - 16129 Genova (Italy)
ph. +39 010 59951 - fax +39 010 5995379/272

fincantieri.com